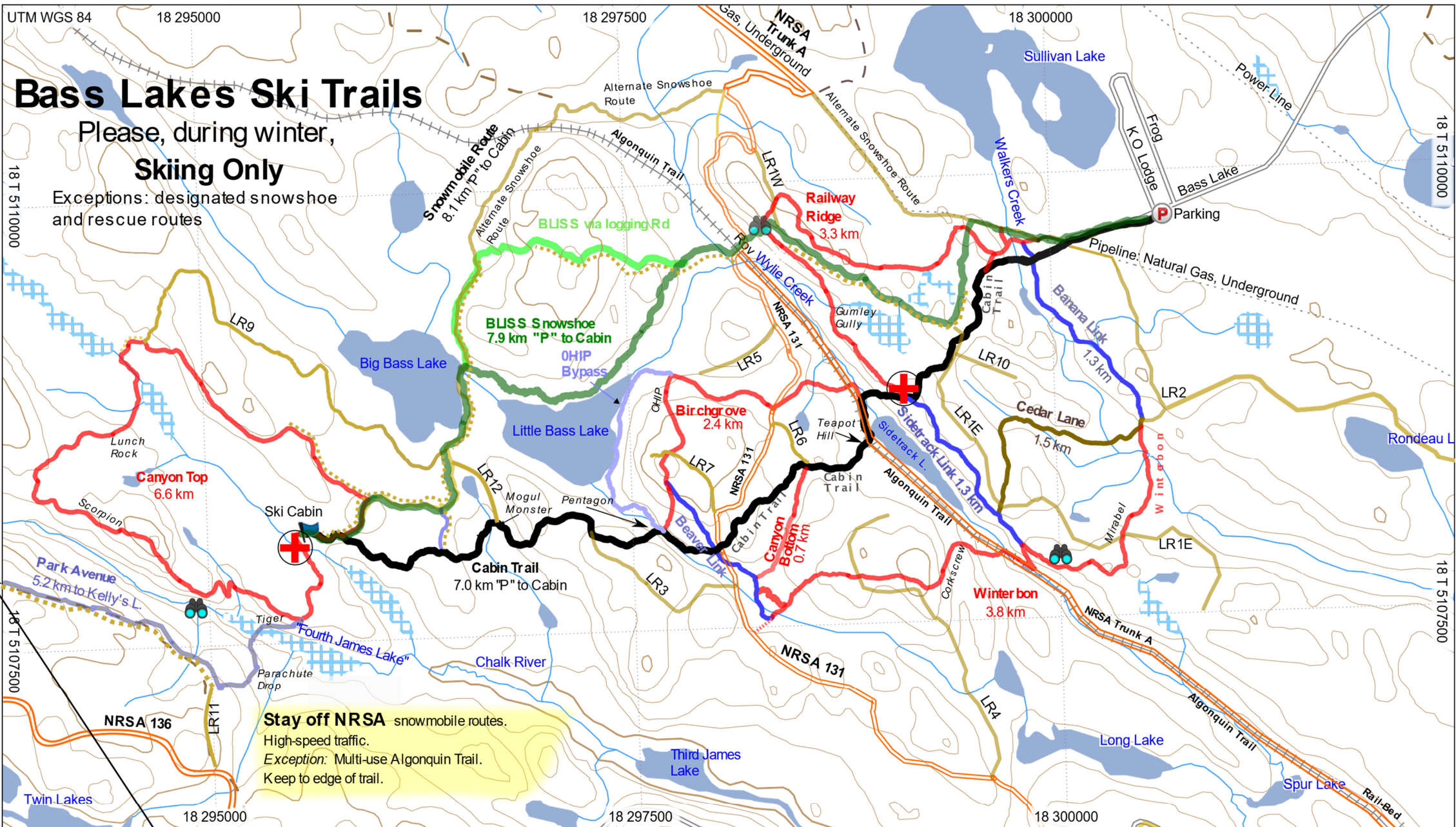


# Bass Lakes Ski Trails

Please, during winter,  
**Skiing Only**

Exceptions: designated snowshoe  
and rescue routes



Topo Canada v4  
©2009 Garmin® Ltd. or its subsidiaries  
©DM11 Spatial 2008

"Park Avenue" ski trail crosses NRSA 136  
at the Algonquin Park boundary.  
NRSA 136 can be accessed from NRSA 134.

**Stay off NRSA** snowmobile routes.  
High-speed traffic.  
Exception: Multi-use Algonquin Trail.  
Keep to edge of trail.

- **Rescue Route**  
*Probably accessible by snowmobile.*
- - - - - Snowshoe/ski trail on logging road
- Snowmobile Highway

- + First aid equipment  
and rescue toboggan
- Viewpoint

0 m 350 m 700 m 1050 m 1400 m

2025 Mar. 11 STC

Inform rescuers: Maps at [www.DRXC.ca/MAPS](http://www.DRXC.ca/MAPS)

MN TN  
-12.6°  
GARMIN  
2010-01-01

## SKI TRAILS

The Bass Lakes Ski Trails and associated ski cabin are registered with the Ministry of Natural Resources and Forestry by the Deep River Cross Country Ski Club (DRXC). Please consider membership in the DRXC or a donation to help fund these facilities. See [www.DRXC.ca](http://www.DRXC.ca) for details.

During winter, ski trail use is restricted to **skiing only**. A snowshoe route to the cabin, the "BLISS" trail, is also provided as well as an alternate via a minor snowmobile trail. Please see [www.DRXC.ca/maps](http://www.DRXC.ca/maps) for the latest versions of this map, and maps providing detailed directions for the snowshoe trails.

All Bass Lakes Ski Trails are of moderate or greater difficulty due to hilly terrain and the lack of any grooming. In general, they are more difficult than the trails at the Petawawa Research Forest, and much more challenging than the Silver Spoon trails. Skiing Bass Lakes trails should not be attempted until one can at least competently ski the Silver Spoon P-Loop.

Access the trails from the end of Bass Lake Road (Point Alexander). Parking space is limited. Please do not block access for snowmobiles and leave the larger parking areas for vehicles towing trailers.







## SNOWMOBILE TRAILS

When crossing a major snowmobile trail, stop, listen, look both ways, cross quickly and get completely off the snowmobile trail. Locate on the map the intersections with NRSA Trunk A, and NRSA 131. **Note** that the Cabin Trail and Beaver Link cross NRSA 131 on hills. Ski under control to avoid shooting out onto NRSA 131 in front of a snowmobile!

All trails start by sharing the unplowed length of Bass Lake Rd. with snowmobiles. Move well to the side to allow snowmobiles to pass.

## SAFETY

See <http://DRXC.ca/emergency-plan/> for general advice and an emergency plan. Carry this map and inform rescuers of map availability at [www.DRXC.ca/maps](http://www.DRXC.ca/maps). Notes specific to this map are:

-  Potential rescue route trail/road/rail-bed. Each route is labelled to facilitate *communication with rescue personnel*.
-  A ski/snowshoe trail utilizing a logging road suitable for use by a rescue snowmobile
-  An old logging road, but not part of a rescue route.
-  NRSA North Renfrew Snowmobile Association trail. Check for snowmobile traffic, cross quickly. Do not ski along NRSA trails except along the edge of the Multi-Use Algonquin Trail (also Trunk A snowmobile trail)
-  LR Logging Road
-  Location of first-aid supplies (in blue barrel) and rescue toboggan. At the Ski Cabin, the barrel is on the porch, the toboggan is under the porch.

Do not hesitate to call 911. Local search and rescue support *may* be available from those listed below:

Volunteer	Land Line	Cell Phone
<i>Search/Rescue</i>		
Mike Beale	n/a	613-635-1297
Karen Colins	613-584-2880	613-717-0712
Diane/Phil Davis	613-584-3033	613-732-5162
Erik Hagberg	613-584-4636	613-633-2828
Helena Rummens	613-584-4321	613-717-9202
<i>Snowmobile</i>		
Ross Meadowcroft	613-584-3619	613-639-1461
<i>General Contact/Coordinator</i>		
Diane/Phil Davis	613-584-3033	613-732-5162
Bob Donders	613-584-4321	613-618-6123